

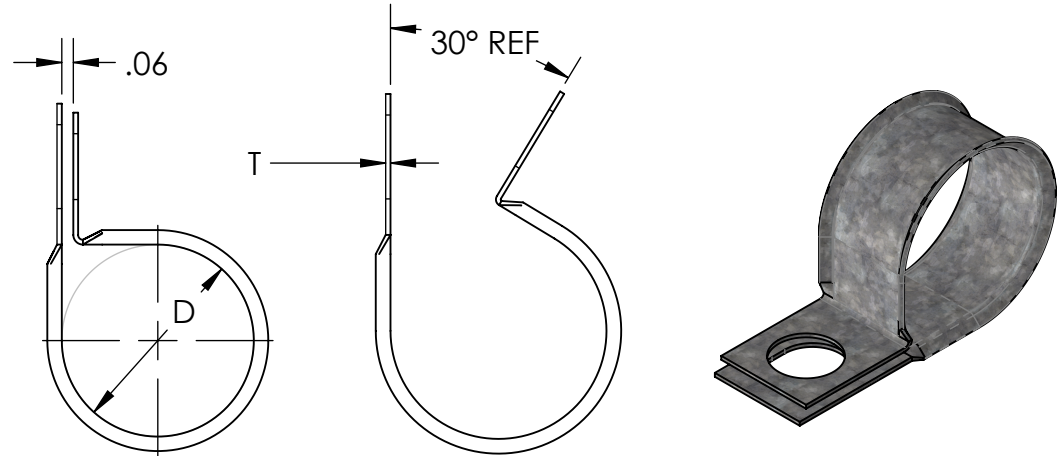
Material and Finish Codes

Z1 - CS, HD Galvanized, Chem Treated G90

Z2 - CS, .0002 min. Zinc, Clear

REVISIONS

REV.	DESCRIPTION	DATE	APPROVED
1	Corrected Center to Center Formulas	5/2/2022	C. Goettl
2	Material Thickness Change	6/27/2023	C. Goettl

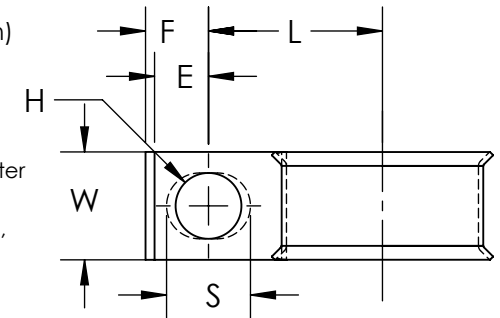


As Supplied
(Open Position)

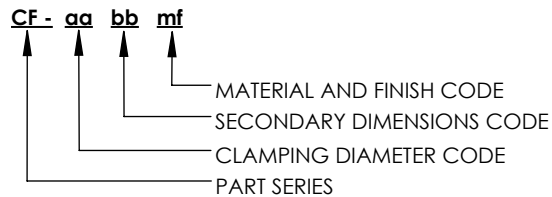
Clamping Diameter (D)	Center to Center (L)		
	bb = 09	bb = 11	bb = 13
$\frac{aa}{16}$	$\frac{aa + 12}{32}$	$\frac{aa + 13}{32}$	$\frac{aa + 15}{32}$
± .015	± .031		

bb	Hole Diameter (D)	Hole Center to End (E)	Slot Length to End (F)	Slot Length (S)	Width (W)	Material Thickness (T)
09	.281	.250	.296	.375	.500	.032
11	.343	.281	.328	.437	.562	
13	.406	.312	.359	.500	.625	
	± .005	± .015	± .015	± .020	± .010	

Note: CF clamps have a circular hole with diameter H on the top side and a slotted hole with H width, and length S, on the bottom side.



EXPLANATION OF PART CALLOUT



EXAMPLE OF PART CALLOUT

CF - 12 13 Z1

This part number indicates the clamp will have dimensions:
Clamping Diameter (D) = .75
Hole Diameter (H) = .406
Center to Center (L) = .843
Width (W) = .625
Hole Center to End (E) = .312
Slot Center to End (F) = .359
Slot Length (S) = .500

Made from CS, Hot Dipped Galvanized,
Chem Treated G90

KMCTM

THE ORIGINAL CLIP & CLAMP CO.

1221 SOUTH PARK STREET
PORT WASHINGTON, WI 53074
(262) 377-5030

PROPRIETARY AND CONFIDENTIAL

THE INFORMATION CONTAINED IN THIS DRAWING IS THE SOLE PROPERTY OF KICKHAEFER MANUFACTURING COMPANY. ANY REPRODUCTION IN PART OR AS A WHOLE WITHOUT THE WRITTEN PERMISSION OF KICKHAEFER MANUFACTURING COMPANY IS PROHIBITED.

PART SERIES
MASTER PRINT

CF

FLARED EDGE CLAMPS

DRAWN CHECKED

BC KW

8/22/17 9/11/18

NOT TO SCALE