

5

4

3

2

1

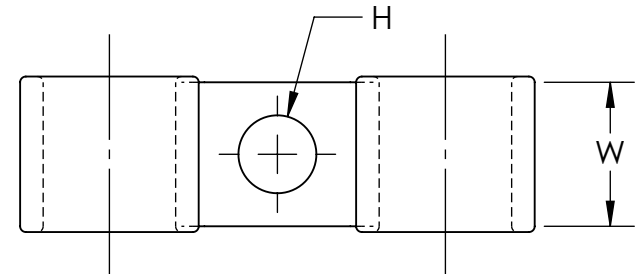
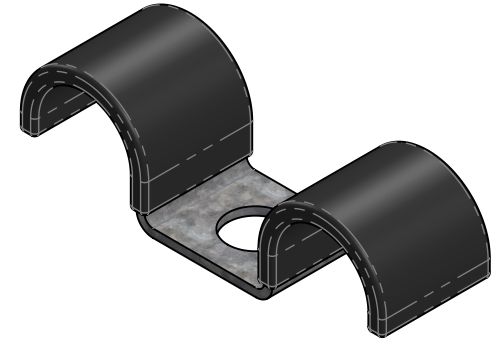
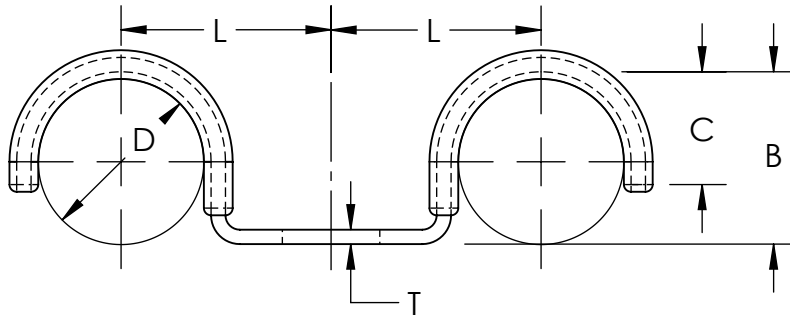
**Material and Finish Codes**

Z1 - CS, HD Galvanized, Chem Treated G90  
 Z2 - CS, .0002 min Zinc, Clear

Cushion is Black Vinyl, 1/32" Thick

## REVISIONS

REV.	DESCRIPTION	DATE	APPROVED
1	removed four size and finish options	12/14/2020	C. Goettl
2	removed six size options	3/28/2024	C. Goettl



Part Number	Clamping Diameter (D)	Center to Center (L)	Width (W)	Hole Diameter (H)	Base to Top of Radius (B)	Closure (C)	Material Thickness (T)
CMV-0709	.375	.687	.750	.281	.375	.343	.060
CMV-0711				.343			
CMV-0809	.437	.812		.281	.437	.250	
CMV-0811				.343			
CMV-0909	.500	.875		.281	.468	.400	
CMV-0911				.343			
CMV-1009	.562	.625	1.000	.281	.625	.500	
CMV-1011				.343			
CMV-1109	.625			.281		.437	
CMV-1209*	.687	.875	.750	.281	.718	.500	
CMV-1211*				.343			
CMV-1213*				.406			
	± .031	± .031	± .010	± .005	± .015	REF.	± .002

\*Part only available in Z2

**KMC**<sup>TM</sup>

THE ORIGINAL CLIP & CLAMP CO.

1221 SOUTH PARK STREET  
 PORT WASHINGTON, WI 53074  
 (262) 377-5030

**PROPRIETARY AND CONFIDENTIAL**

THE INFORMATION CONTAINED IN THIS DRAWING IS THE SOLE PROPERTY OF KICKHAEFER MANUFACTURING COMPANY. ANY REPRODUCTION IN PART OR AS A WHOLE WITHOUT THE WRITTEN PERMISSION OF KICKHAEFER MANUFACTURING COMPANY IS PROHIBITED.

PART SERIES  
 MASTER PRINT

**CMV**

COATED DOUBLE  
 PIPE CLAMPS

DRAWN CHECKED

BC KW

8/22/17 11/28/18

NOT TO SCALE

5

4

3

2

1

D

C

B

A

D

C

B

A