

5

4

3

2

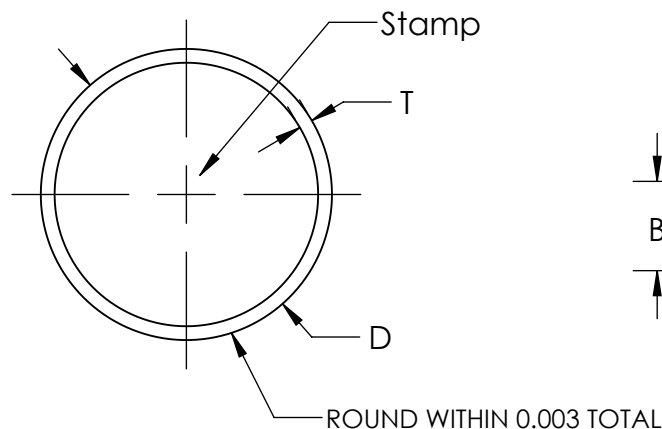
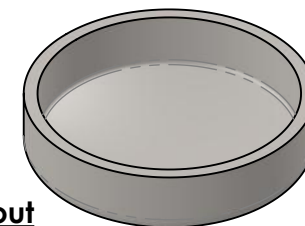
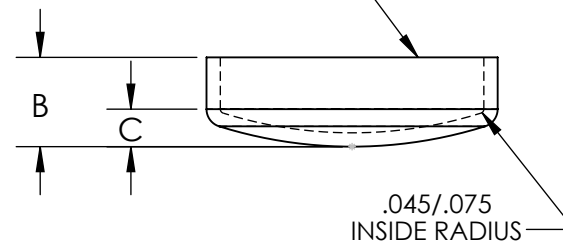
1

**EXPLANATION OF PART CALLOUT****PC aaaa mf**

MATERIAL AND FINISH CODE  
SIZING CODE  
PART SERIES

**Material and Finish Codes**

Z2 - CS, .0002 min Zinc, Clear

THIS SURFACE TO BE SQUARE AND FLAT  
WITHIN .020 TOTAL

General Table

Part Number	Nominal Diameter	*Outside Diameter (D)	Overall Height (B)	Crown Height (C)	Steel Thickness (T)	Recommended Hole Diameter
PC-0500	1/2	.510-.512	.230-.270	.049-.075	.042	.504-.506
PC-0562	9/16	.572-.574				.566-.568
PC-0625	5/8	.635-.637				.629-.631
PC-0687	11/16	.697-.699				.691-.693
PC-0750	3/4	.760-.762				.754-.756
PC-0812	13/16	.823-.825	.290-.330	.057-.083	.048	.817-.819
PC-0875	7/8	.885-.887				.879-.881
PC-1000	1	1.010-1.012				1.002-1.005
PC-1125	1-1/8	1.135-1.137				1.127-1.130
PC-1250	1-1/4	1.260-1.262				1.252-1.255
PC-1500	1-1/2	1.506-1.508	.340-.380	.077-.113	.060	1.497-1.500
PC-1750	1-3/4	1.760-1.762				1.751-1.754
PC-1875	1-7/8	1.885-1.887				1.876-1.879
PC-2000	2	2.010-2.012				2.001-2.004
PC-2500	2-1/2	2.513-2.518				2.500-2.504
PC-3000	3	3.010-3.013	.480-.540	.111-.167	.074	3.000-3.004

\*OD before plating

**Example of Part Callout****PC 1125 Z2**

This part number indicates this plug will have dimensions:  
Nominal Diameter = 1-1/8  
Outside Diameter (D) ≈ 1.136  
Overall Height (B) ≈ .310  
Crown Height (C) ≈ .085  
Material Thickness (T) = .048

Made from CS, .0002 min Zinc, Clear

THE ORIGINAL CLIP &amp; CLAMP CO.

1221 SOUTH PARK STREET  
PORT WASHINGTON, WI 53074  
(262) 377-5030

**PROPRIETARY AND CONFIDENTIAL**

THE INFORMATION CONTAINED IN THIS DRAWING IS THE SOLE PROPERTY OF KICKHAEFER MANUFACTURING COMPANY. ANY REPRODUCTION IN PART OR AS A WHOLE WITHOUT THE WRITTEN PERMISSION OF KICKHAEFER MANUFACTURING COMPANY IS PROHIBITED.

**PART SERIES  
MASTER PRINT****PC**CARBON STEEL  
EXPANSION PLUGS

DRAWN

CHECKED

BC

KW

8/22/17

9/11/18

NOT TO SCALE

5

4

3

2

1